

## Alberta Regional Lily Society FALL Lily Bulb Sales 2022

**GREENLAND GARDEN CENTRE** 23108 Highway 16 & Cloverbar Road **SHERWOOD PARK** SEPTEMBER 24 SATURDAY 9 a.m. – 5 p.m. SEPTEMBER 25 SUNDAY 9 a.m. TO 4:30 p.m.

**EDMONTON HORTICULTURAL SOCIETY** Central Lions Centre, 11113 - 113 Street **EDMONTON** SEPT 26 MONDAY EVENING 6:30 p.m. – 8:30 p.m. non-EHS members \$5

**COCHRANE- ANYTHING GROWS** 209 River Ave. **OCT. 1 10 a.m. – 4 p.m. OCT. 2 10 am – 4 p.m.**

### MEMBER PRE-SALES GUIDELINES

1. All orders to be sent to [brittaj@telus.net](mailto:brittaj@telus.net) or [finance@arls-lilies.org](mailto:finance@arls-lilies.org)
2. Orders will be taken starting **September 14, NOT** before.
3. Bulb orders will be filled in the order received.
4. Quantities are very limited for some varieties. There will only be 1 bulb per variety per order to start for most varieties. If there are bulbs left after the public sales, extras will be added to your order. You may order 3 of each of the following varieties:
  - a. Aladdin's Beauty
  - b. Aladdin's Sun
  - c. Burnett Orange
  - d. Citronella
  - e. Evening Star
  - f. Jasper
  - g. Mango
  - h. Oklahoma
  - i. Picasso
  - j. Real Time
  - k. Red Velvet
  - l. Royal Delight, Royal Dream, Royal Lace, Royal Perfume
  - m. Tiger Babies
  - n. Dalhansonii
5. Orders may be picked up Saturday, Sept. 24 and Sunday Sept. 25 at Greenland or by making arrangements to pick up at Britta's – 9115 67 Ave. Edmonton. Let me know beforehand so I can have your order along. [brittaj@telus.net](mailto:brittaj@telus.net). 780-433-7869 or cell phone 780-884-2093.
6. Southern Alberta orders may be picked up at Anything Grows greenhouse in Cochrane Saturday, Oct. 1 and Sunday, October 2.
7. All mail orders must be paid by cheque or e-transfer before shipping.

**Many of these varieties have not been in our sale since 2007 don't miss getting some of these old favourites**

### **ASIATICS Div. I & Div VIII LA's**

#### [Ace of Spades](#)

Alladin's Beauty LA

Alladin's Sun LA

Angela North

\*\*\*Apricot Glow

#### [Baby Pink Bells](#)

Black Jack

Blackout

[Black Velvet](#)

\*\*\*[Bold Knight](#)

[Brushstroke](#)

[Burnett Orange](#)

[Burnett Red Tiger](#)

[Butter & Cream](#)

[Cancun](#)

\*\*\*[Centuria](#)

[Cherished](#)

[Cherry Wheels LA](#)

Citronella

Commander in Chief

Coral Sunrise

Corrida

Corsica

[Cotton Candy](#)

[Courier](#)

[Delta](#)

[Dimples](#)

[Dynamico LA](#)

[Elgrado- pixie](#)

[Embarrassment](#)

\*\*\*[Evening Star](#)

[Fangio](#)

\*\*\*[Flaming Giant](#)

[Fuego](#)

\*\*\*[Garden Bouquet](#)

[George Slate](#)

[Golden Joy-pixie](#)

[Grand Cru](#)

**(10% ARLS membership discount on bulb purchase) • ARRIVE EARLY FOR BEST SELECTION • • SOME QUANTITIES ARE LIMITED •**

Our Bulb Sales helps fund our ongoing projects, education series and lily shows.

Visit [www.arls-lilies.org](http://www.arls-lilies.org) for more information and other sale locations

**bare bulb lilies are Red Lily Beetle FREE**

## Alberta Regional Lily Society FALL Lily Bulb Sales 2022

GREENLAND GARDEN CENTRE 23108 Highway 16 & Cloverbar Road SHERWOOD PARK SEPTEMBER 24 SATURDAY 9 a.m. – 5 p.m. SEPTEMBER 25 SUNDAY 9 a.m. TO 4:30 p.m.

EDMONTON HORTICULTURAL SOCIETY Central Lions Centre, 11113 - 113 Street EDMONTON SEPT 26 MONDAY EVENING 6:30 p.m. – 8:30 p.m. non-EHS members \$5

COCHRANE- ANYTHING GROWS 209 River Ave. **OCT. 1 10 a.m. – 4 p.m. OCT. 2 10 am – 4 p.m.**

Halloween

Honey Pink

\*\*\*Jasper

Jetfire

Kaz Mynet

Kentucky LA

Kimberly Ann

King Pete

LaBelle

Lady Dawn

\*\*\*Lemon Lady

Lollypop

Loreto

Luxor

Madras

Mango

Mapira

Matrix- pixie

Melon Time

Mirella

Montreaux

\*\*\*Morden Butterfly

Mother Teresa

Nepal

Oklahoma

Olina

Pan

Paul Bunyan

Peach Melba

Picasso

\*\*\*Pink Champagne

Pink Chianti

Plum Burgundy

\*\*\*Prairie Harlequin

Presto

Puff pixie

Purple Diamond LA

Purple Life

Real Time

Red Alert

Red Raven

Red Ticklers

Red Velvet

\*\*\*Redland

Rochester

Rodeo

Rosella

Rose Point Lace

Rosita

Royal Camelot LA

Royal Delight LA

Royal Dream LA

Royal Lace LA

Royal Love LA

Royal Parade LA

Royal Paradise LA

Royal Perfume LA

Royal Sunset LA

Salmon Cream

Samur

San Sorbet

Sherri Katherine

Shirley

Sorbet

South Pacific

\*\*\*Stuart Criddle

Summer Tan

Sweet Kiss

Sweetheart Gypsy

Tabasco

Tiger Babies

Tinkerbelle

Tiny Double You

Tiny Snowflake

\*\*\*Towering Turk

Tropical Breeze

Tropical Dream

Uncle Albert

Veronika

White Henryi

\*\*\*White Picture

**(10% ARLS membership discount on bulb purchase) • ARRIVE EARLY FOR BEST SELECTION • • SOME QUANTITIES ARE LIMITED •**

Our Bulb Sales helps fund our ongoing projects, education series and lily shows.

Visit [www.ars-lilies.org](http://www.ars-lilies.org) for more information and other sale locations

**bare bulb lilies are Red Lily Beetle FREE**

## Alberta Regional Lily Society FALL Lily Bulb Sales 2022

**GREENLAND GARDEN CENTRE** 23108 Highway 16 & Cloverbar Road **SHERWOOD PARK** SEPTEMBER 24 SATURDAY 9 a.m. – 5 p.m. SEPTEMBER 25 SUNDAY 9 a.m. TO 4:30 p.m.

**EDMONTON HORTICULTURAL SOCIETY** Central Lions Centre, 11113 - 113 Street **EDMONTON** SEPT 26 MONDAY EVENING 6:30 p.m. – 8:30 p.m. non-EHS members \$5

**COCHRANE- ANYTHING GROWS** 209 River Ave. **OCT. 1 10 a.m. – 4 p.m. OCT. 2 10 am – 4 p.m.**

\*\*\*Winered

Yellow Blaze

Yellow Whopper

Yum Yum

### UNNAMED ASIATICS BY COLOURS;

Apricot, Coral Gold, Lemon Yellow, Burnt Orange, Clear Orange, Pale Orange, Pink Coral, Pink & White, Scarlet, Clear White

### MARTAGONS DIV II

Akamina

Autumn Colours

Brocade

\*\*\*Bronze Medallion

\*\*\*Cadense

Claude Shride

Dalhansonii

\*\*\*Golden Green

\*\*\*Redsing

\*\*\*Rosalinda

Sarcee

Sing Out

Sutton Court

Sweet Betsy

\*\*\*Tsingense

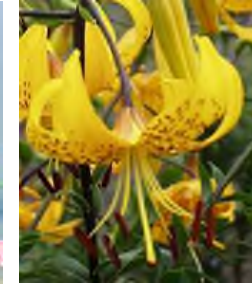
### SPECIES Div. IX

*L. amabile*

*L. hansonii*

*L. leichtlinii*

*L. leichtlinii* var *mazimowitchii*



\*\*\*Canadian

Albertan



*Pictures left to right-*

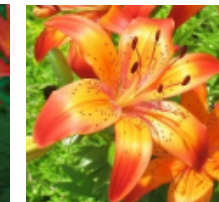
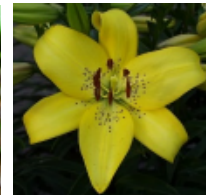
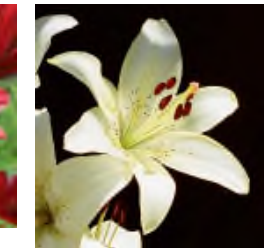
*Red Raven, Citronella, Kimberly Ann;*

*Sorbet, Honey Pink, Garden Bouquet, Loreto;*

*Plum Burgundy, Royal Lace, Mapria;*

*Olina, Aladdin's Sun, Corrida, Matrix, Prairie Harlequin,*

*Royal Dream, Red Velvet;*



**(10% ARLS membership discount on bulb purchase) • ARRIVE EARLY FOR BEST SELECTION • • SOME QUANTITIES ARE LIMITED •**

Our Bulb Sales helps fund our ongoing projects, education series and lily shows.

Visit [www.arls-lilies.org](http://www.arls-lilies.org) for more information and other sale locations

**bare bulb lilies are Red Lily Beetle FREE**

## Alberta Regional Lily Society FALL Lily Bulb Sales 2022

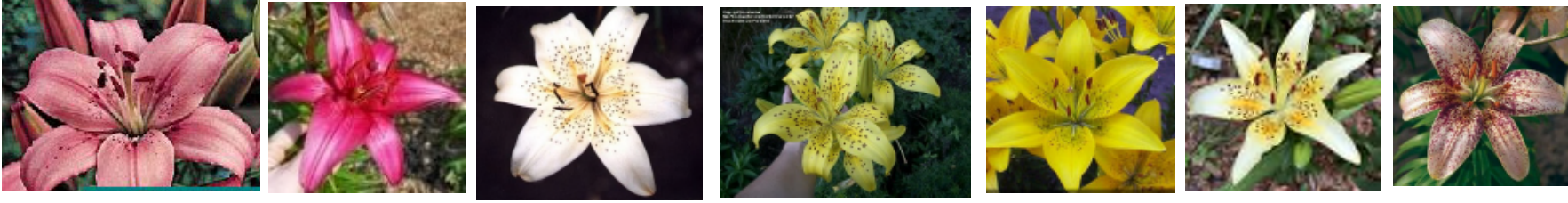
**GREENLAND GARDEN CENTRE** 23108 Highway 16 & Cloverbar Road **SHERWOOD PARK** SEPTEMBER 24 SATURDAY 9 a.m. – 5 p.m. SEPTEMBER 25 SUNDAY 9 a.m. TO 4:30 p.m.

**EDMONTON HORTICULTURAL SOCIETY** Central Lions Centre, 11113 - 113 Street **EDMONTON** SEPT 26 MONDAY EVENING 6:30 p.m. – 8:30 p.m. non-EHS members \$5

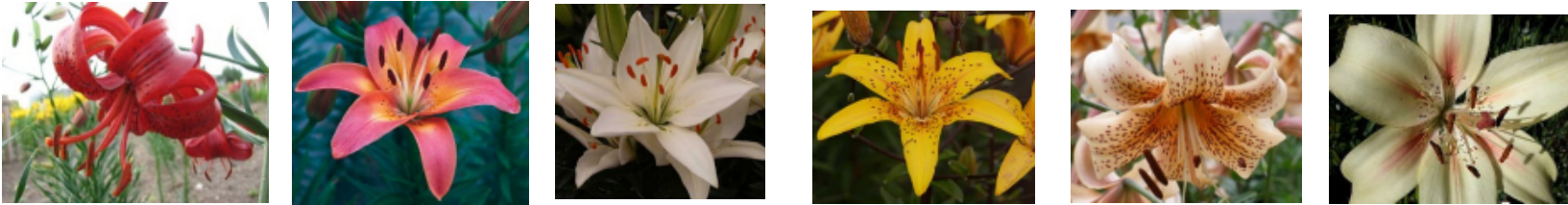
**COCHRANE- ANYTHING GROWS** 209 River Ave. **OCT. 1** 10 a.m. – 4 p.m. **OCT. 2** 10 am – 4 p.m.

*Pictures left to right-*

*Rosita, Winered, White Picture, Yellow Blaze, Yellow Joy, Uncle Albert, Tropical Breeze;*



*Towering Turk, Tropical Dream, Tiny Snowflake, Summer Tan, Tiger Babies, Shirley;*



*Claude Shride, Dalhansonii Powell, Golden Green, Tsingense, Sing Out, Rosalinda, Sweet Betsy.*



**(10% ARLS membership discount on bulb purchase) • ARRIVE EARLY FOR BEST SELECTION • • SOME QUANTITIES ARE LIMITED •**

Our Bulb Sales helps fund our ongoing projects, education series and lily shows.

Visit [www.arsl-lilies.org](http://www.arsl-lilies.org) for more information and other sale locations

**bare bulb lilies are Red Lily Beetle FREE**